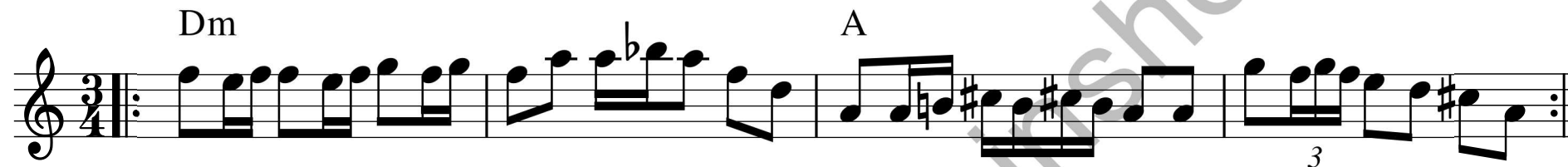


Kwasne přezpolo do cyrkwje

Lausitz, Bearb. R. Brück*



*nach Adolf Černý: Druha zberka narodnych hłosow lužičkoserbskich pėsni, Nr. 108, S. 41
Ein hochzeitliches Feldlied, mit dem man den Brautzug auf dem Weg zur Trauung begleitetete.

13 D A

3

Detailed description: This musical staff contains measures 13 through 16. It begins with a treble clef, a key signature of two sharps (F# and C#), and a repeat sign. The melody consists of eighth and sixteenth notes. Above the staff, the chord 'D' is indicated for the first measure and 'A' for the fourth measure. A triplet of eighth notes is marked with a '3' below the staff in the sixth measure. The staff ends with a double bar line and repeat dots.

17 D A D A

Detailed description: This musical staff contains measures 17 through 20. The melody continues with eighth and sixteenth notes. Above the staff, the chords 'D', 'A', 'D', and 'A' are indicated for measures 17, 18, 19, and 20 respectively. The staff ends with a double bar line and repeat dots.

21 D A G A D

Detailed description: This musical staff contains measures 21 through 24. The melody continues with eighth and sixteenth notes. Above the staff, the chords 'D', 'A', 'G', 'A', and 'D' are indicated for measures 21, 22, 23, 24, and 25 respectively. The staff ends with a double bar line and repeat dots.